



Turn on the lights in mainframe performance management

z/INSIGHT

Agenda

1

About me and us

2

What is z/INSIGHT

3

The Solution

4

Real customer
Findings



Gerald Pfeiffer

Teamlead zProducts

About me

Introduction

I have been working with mainframes for almost 40 years, handling all sorts of tasks and functions. Performance management has also been an important part of my responsibilities for many years, and I am pleased to be able to implement this again at SVA, working together with our customers.





9-11
06/26

A short company introduction

SVA System Vertrieb Alexander GmbH

Profile and corporate objective

Biggest **owner-operated system integrator** in Germany

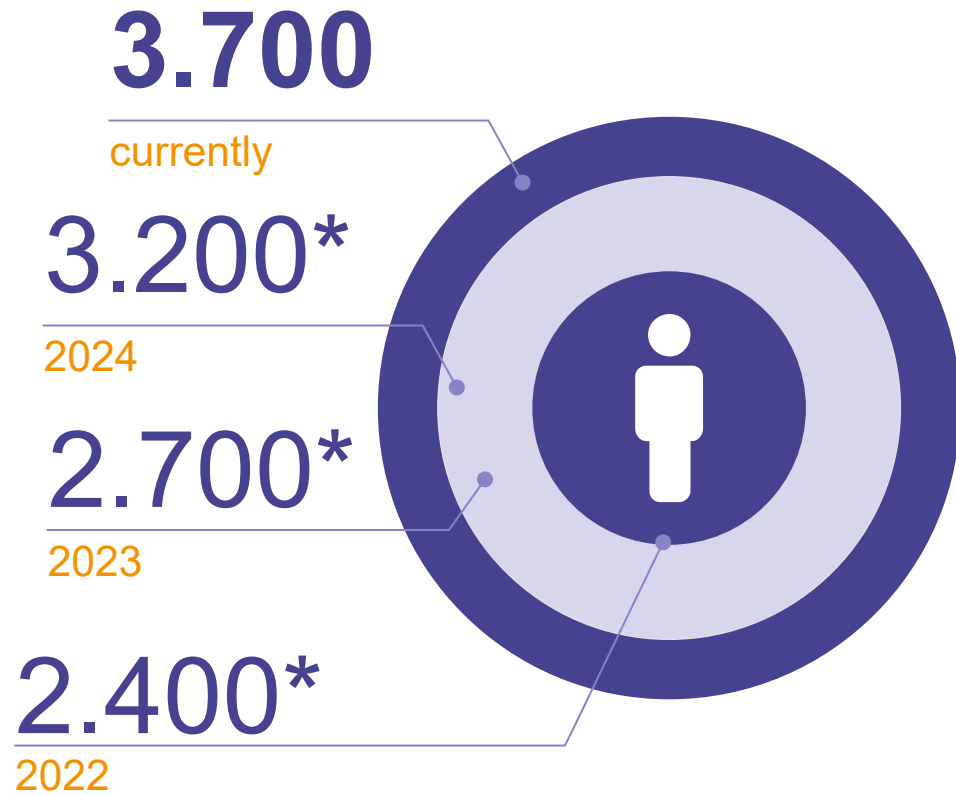
Steady growth with more than **3.700 employees** in Germany

We accompany our customers on a **long-term basis** throughout the project lifecycle.

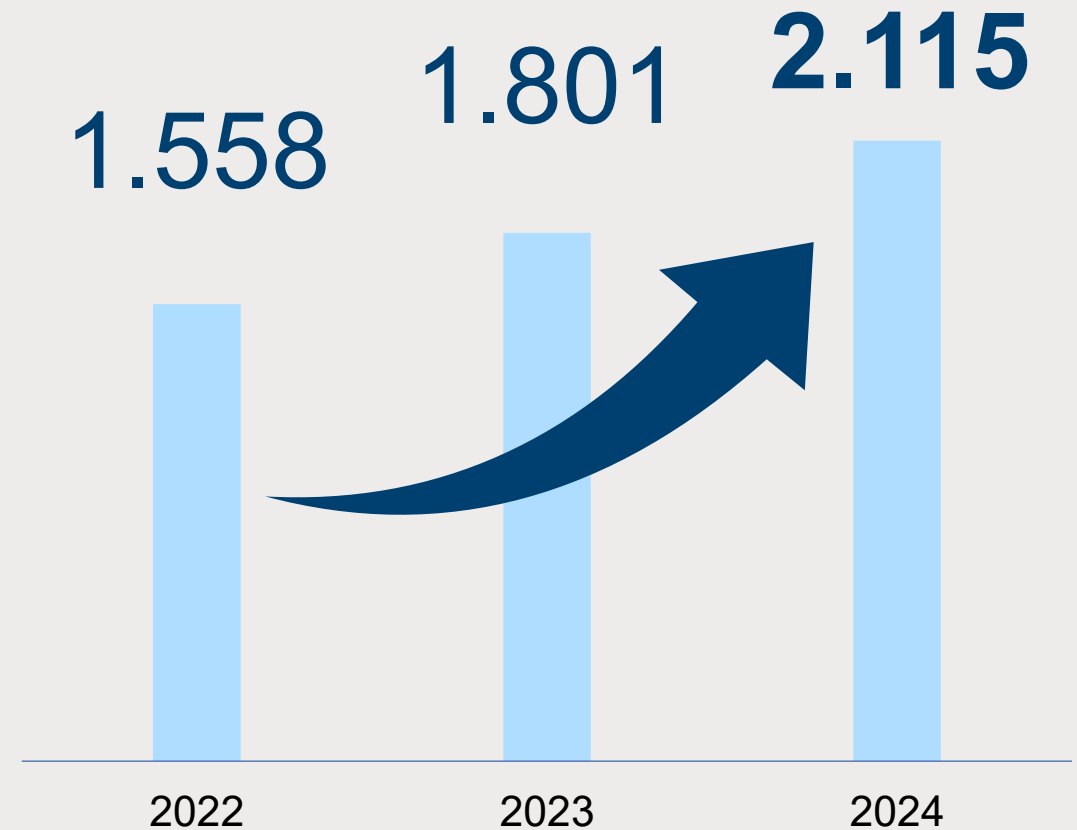


Company objectives

Employees



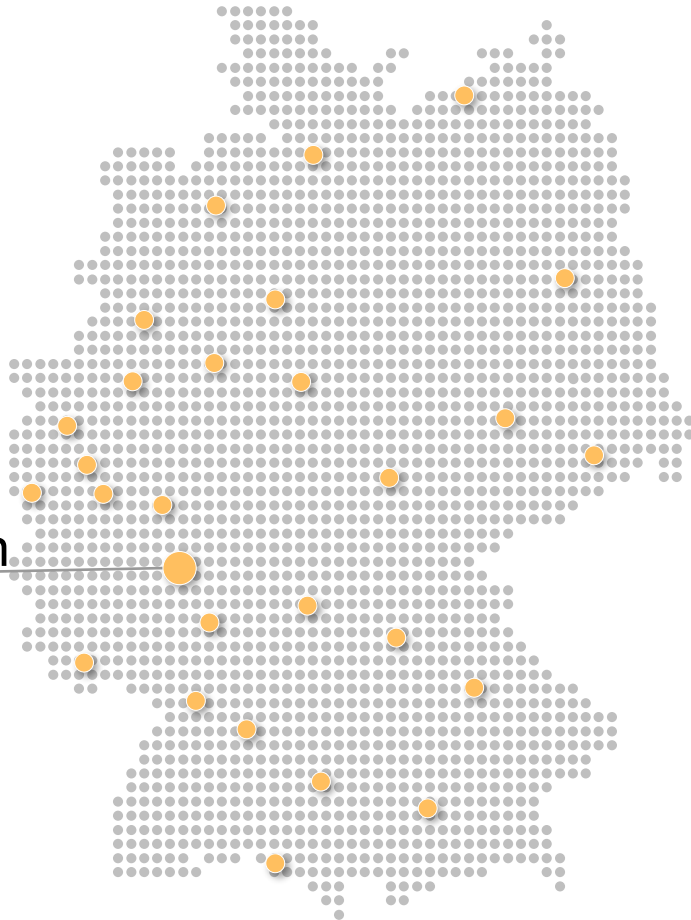
Sales volume in Mio €



Company

28

Locations



Wiesbaden

INDUSTRIES

such as



AUTOMOTIVE



RETAIL



PUBLIC



HEALTH CARE



MASCHINEN &
ANLAGENBAU



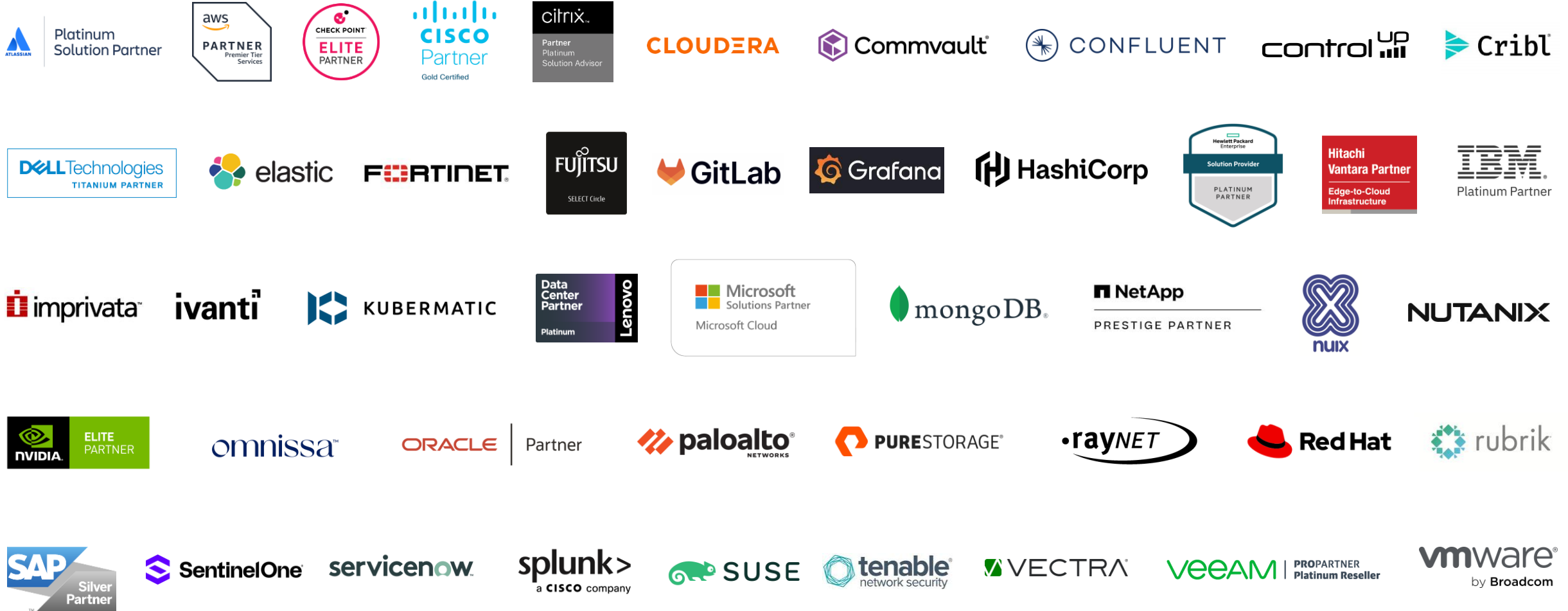
TELEKOMMUNI-
KATION



FINANCE &
INSURANCE

/ What makes us unique?

SVA Partners





We take charge

Before the project start

More than **1.900 technical experts** provide advice & integrate your individual customized solution.

Several hundred solutions in the **comprehensive demo lab**

Cross product and cross vendor **solution development**

Portfolio carefully **chosen for our customers**
more than 100 partnerships with producers

Close relations with access to **producer labs** and influence on roadmaps

/ At a glance

Solution portfolio

→ SVA is the partner for future-proof solutions.

Datacenter & Cloud

Sven Kaminski



- Storage- & Server Systems
- IP Networks Infrastructure
- Software-defined DC/Container
- Cloud & Automation
- Hyperconverged
- Databases
- High-Performance & Quantum Computing

Mainframe

M. Großmann & M. Nickold



- IBM z Hard- and Software Services & Consulting
- Operational Support
- Managed Services
- z/Hosting for Software Developer and VSE
- z/Products

Modern Workplace

Stefan Müller



- Virtual Apps & Desktop
- Unified Endpoint Management
- Identity & Access Management
- Workplace Security
- Digital Employee Experience
- User Productivity & Collaboration
- Modern Work Transformation
- Modern Workplace Consulting

Big Data & AI

Stefanos Katsios



- Data Science & AI
- Operational & Security Analytics
- Business Intelligence
- Internet of Things
- Data Engineering & Microservices
- Unified Service

Agile IT & Software Development

Sarah Mück



- Agility & DevOps Culture
- Software Development
- Infrastructure Automation
- CI/CD
- Cloud Native & Container Solutions

Business Continuity

Michael Todt



- Business Continuity Management
- Backup and Recovery
- Disaster Recovery Planning
- Archiving
- Intelligent Data Management

Digital Process Solutions

Joachim Schmitz



- Intelligent Business Automation
- IT Efficiency & Automation
- Operational Excellence
- Dynamics 365
- Engineering & Architecture

Cyber Security

Mark Sobol



- Information Security & Compliance Consulting
- IT Security Architecture & Integration
- Penetration Testing
- Security Operations Center as Service
- Security Incident Response

SAP

Tobias Kübler



- SAP Analytics
- SAP ERP
- SAP Security
- SAP License Management
- SAP Technology

Traditional mainframe management can't keep up





No more blindspots.

Shine light into the darkness of your
mainframe with **z/INSIGHT**.



z/INSIGHT SaaS-Solution

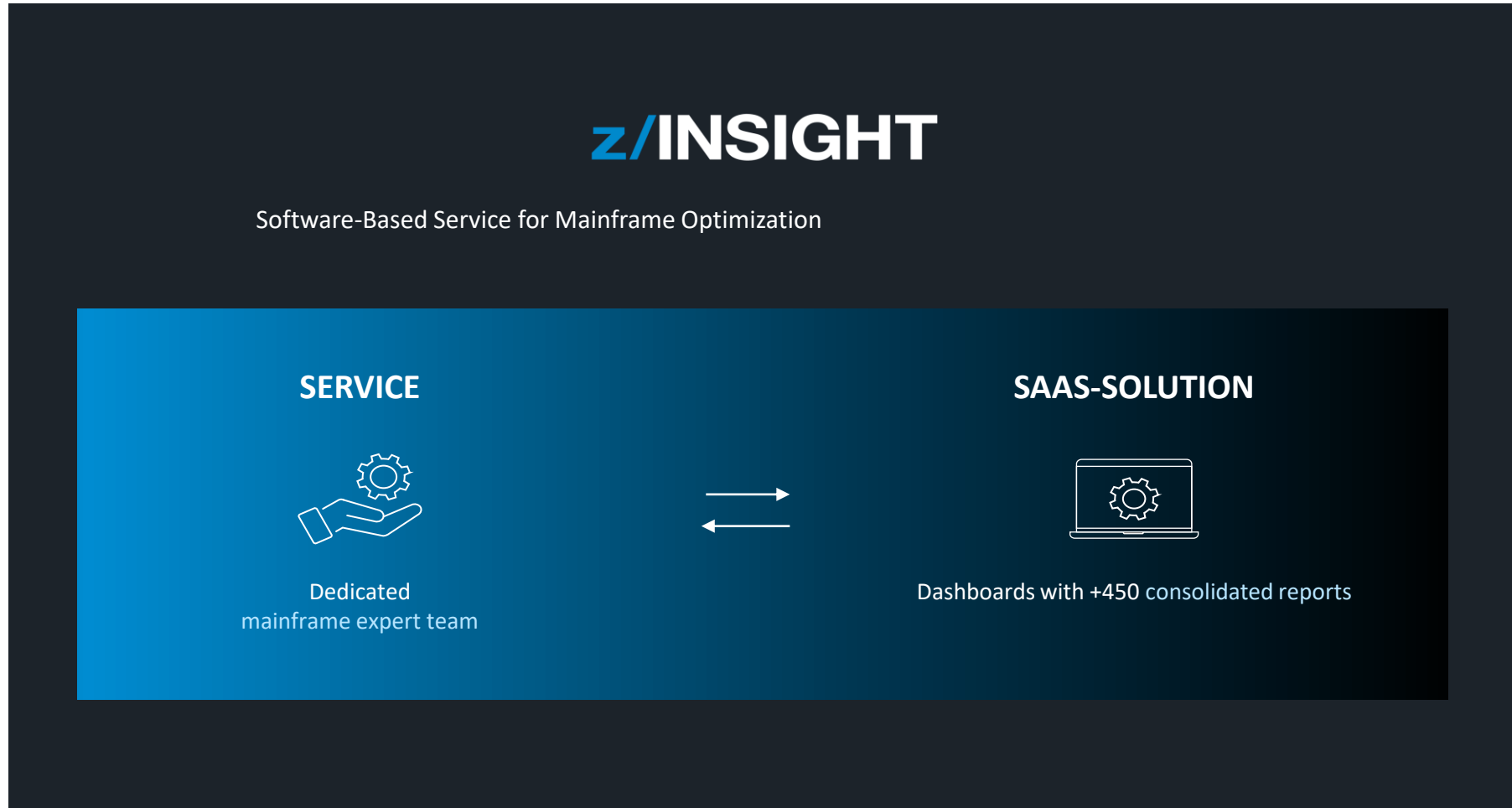
Visualization of Data from z/OS,
CICS, DB2 statistics and more

Data Sources

- SMF30 ST2&3: Jobs / STC
- SMF70
 - ST1: CPU, PR/SM & ICF
 - ST2: Cryptographic Hardware Activity
- SMF71 ST1: RMF Paging Activity
- SMF72 ST3: Workload Activity
- SMF73 ST1: RMF Channel Path Activity
- SMF74
 - ST2: XCF Activity
 - ST4: Coupling Facility Activity
- SMF75 ST1: RMF Page data set activity
- SMF78 ST2: Virtual Storage Activity
- SMF88 ST1: System Logger Data
- SMF89 ST1: Summary usage data for all products across the system
- SMF99 ST14: Contains HiperDispatch topology data
- SMF100 ST0&1: Db2 Statistics
- SMF113 ST1&2: Hardware capacity, reporting, and statistics + Hardware Event Counter
- SMF191 ST3,4,5&6: Hitachi Vantara Mainframe Analytics Recorder
- SMF226: CICS SMF110 (mit SVA Data Collector)



Overview

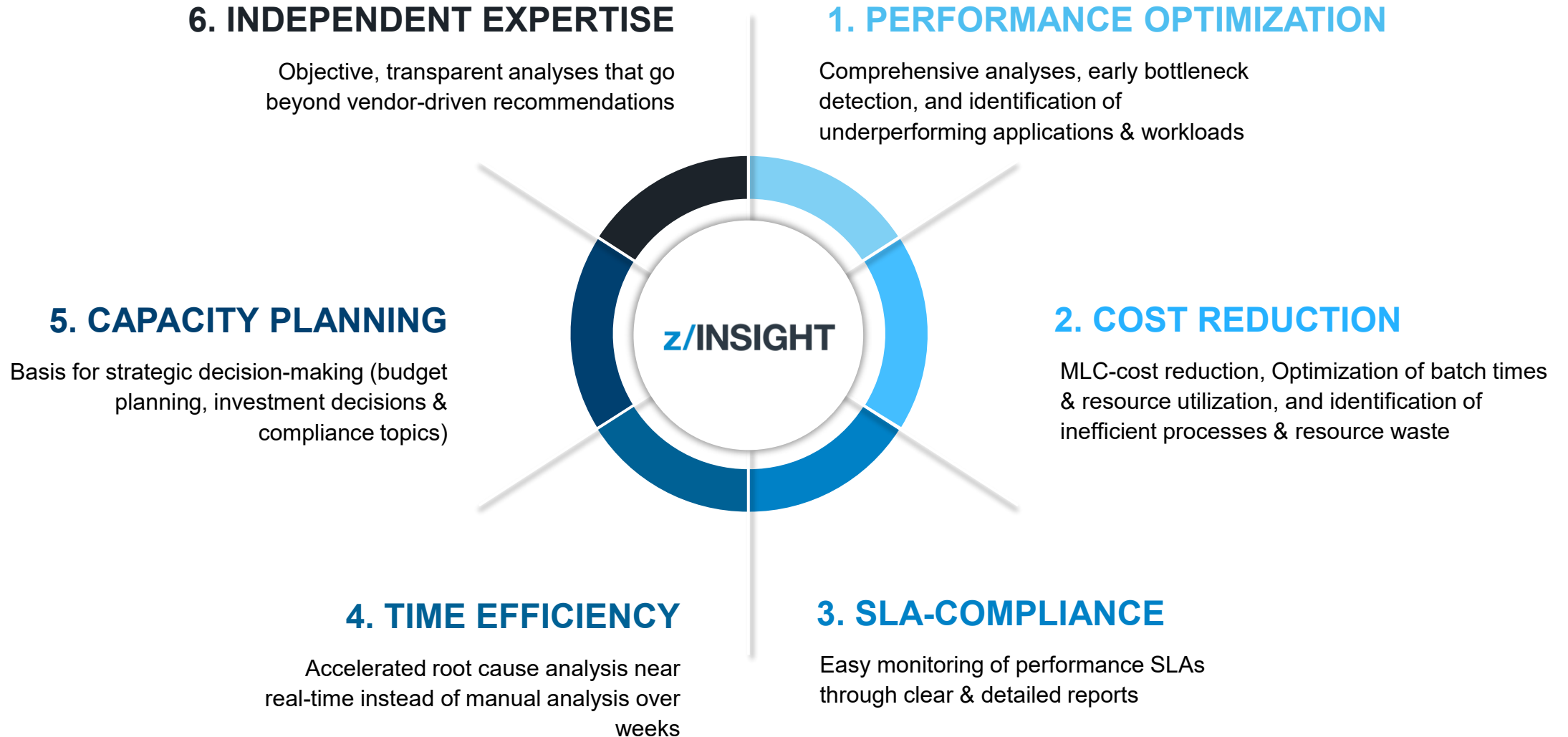


z/OS

DB2 Statistics

CICS

Benefits



Service Process





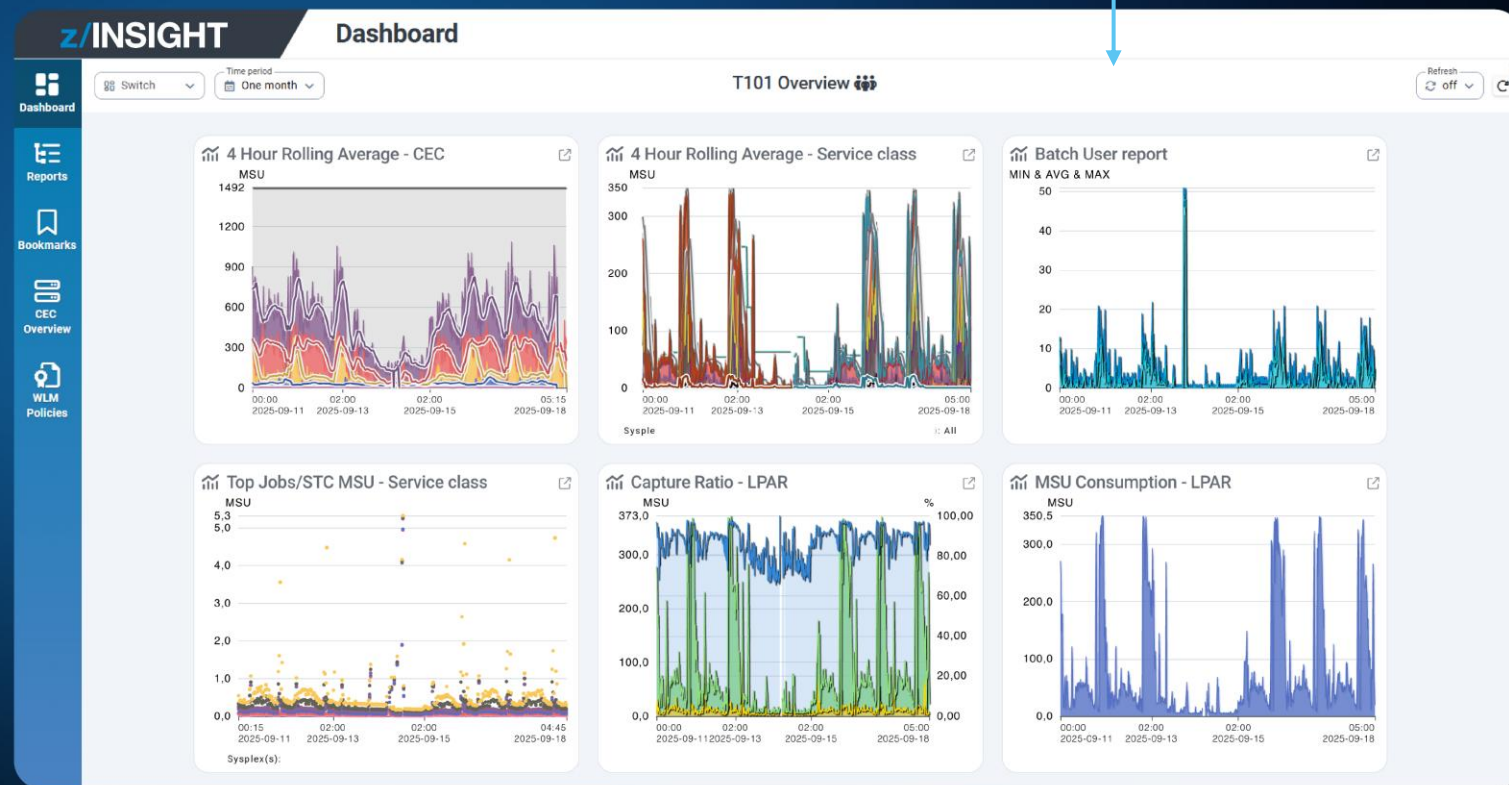
z/INSIGHT Service

From data analysis to
recommendations for action to
implementation.
Screenshots and real customer
examples.

Software Overview

Customizable Dashboards

- Menu:**
- Dashboards
 - Reports
 - Bookmarks
 - CEC Overview
 - WLM Policies



+450 consolidated reports

Bookmarks

Quick access to important reports

- Individual configuration
- Private and Public



z/INSIGHT Bookmarks

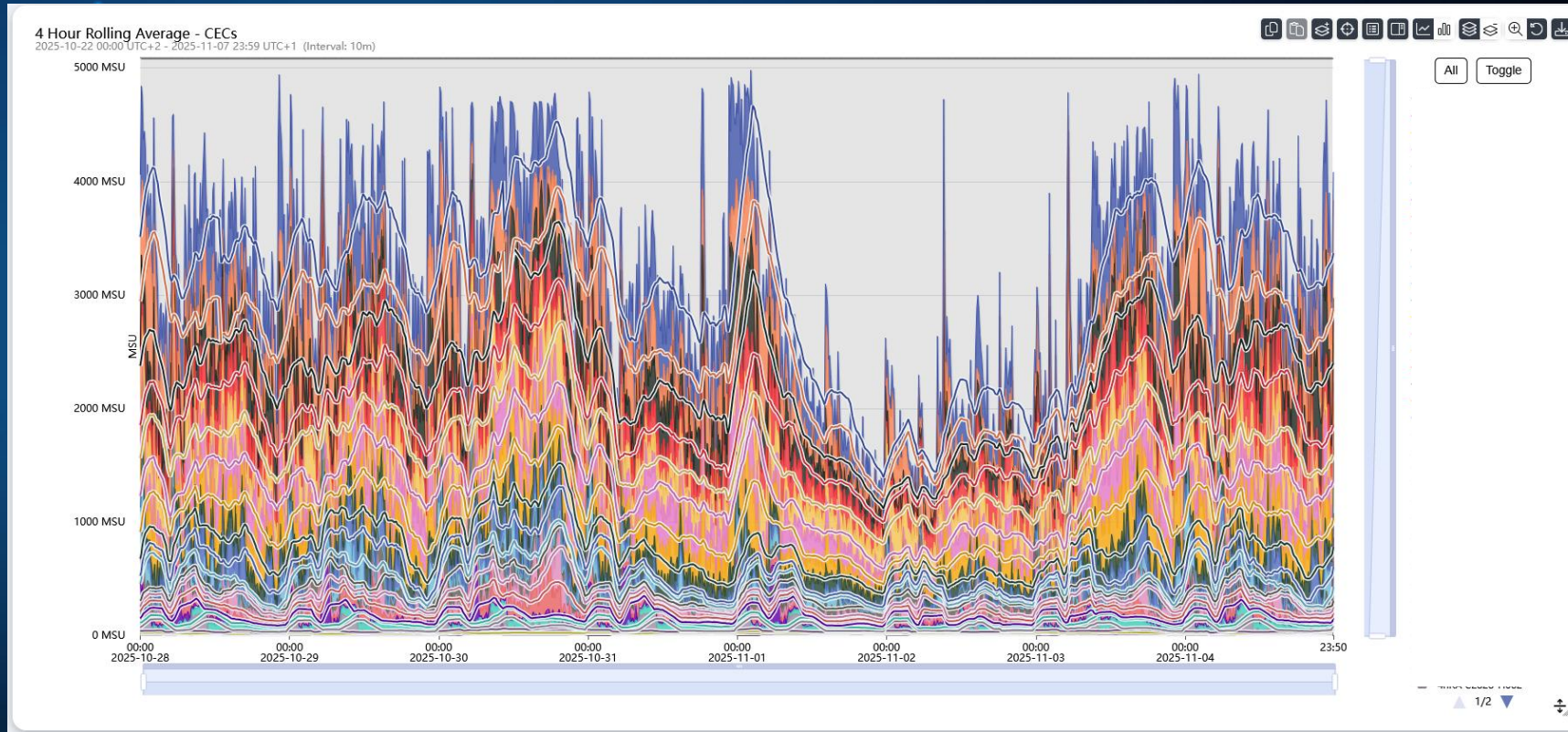
Customer SVA

Search bookmarks

- Meine Bookmarks
 - 4 Hour Rolling Average - LPAR
 - DASD I/O - LPAR
 - Workload Pie Overall
- Meine geteilten Bookmarks
 - Bucket 1-14 % by Service class

Version: 1.0.10 © SVA System Vertrieb Alexander GmbH A product by SVA

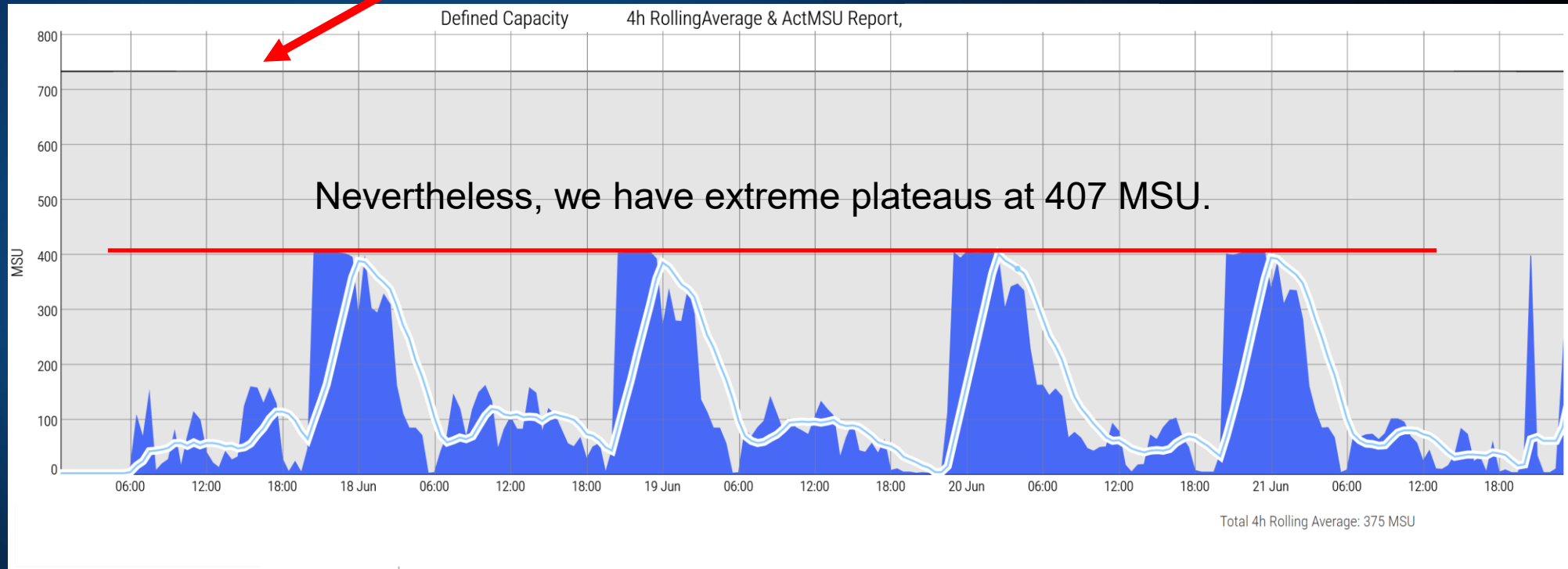
4h Rolling Average - CEC View



Full capacity – capping “threatens”

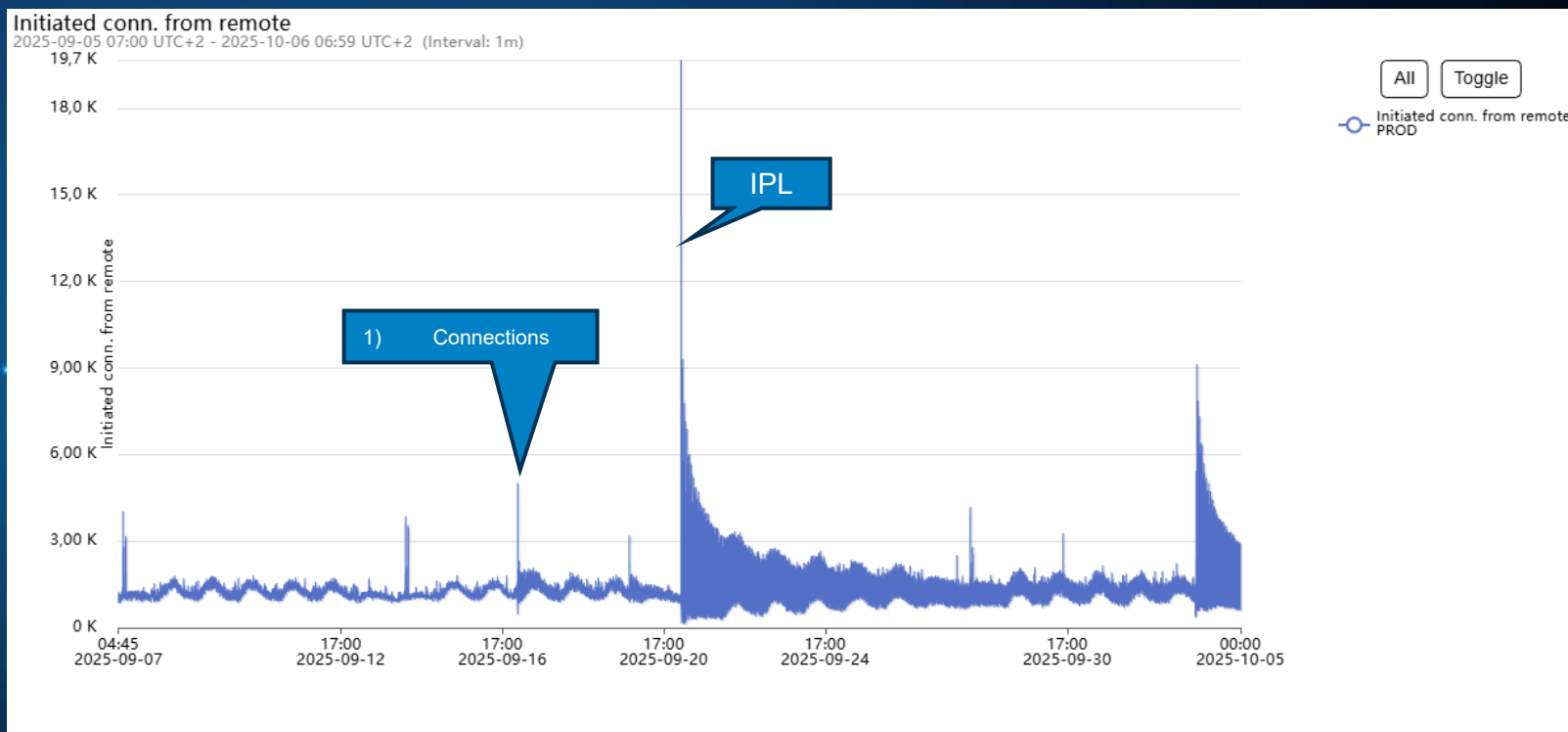
A capping example

The capping limit is at 734.



Since there is no capping here, one should take a closer look.

A Db2 example



From this point on, the connections to Db2 behave differently. While the values were previously close together within the intervals, here they jump significantly more between two intervals. The line becomes thicker. Maintenance was performed on the network switches at this time. This should be checked and compared again in a few weeks.



WLM Basics

What is good, what is bad,
what is a Myth?

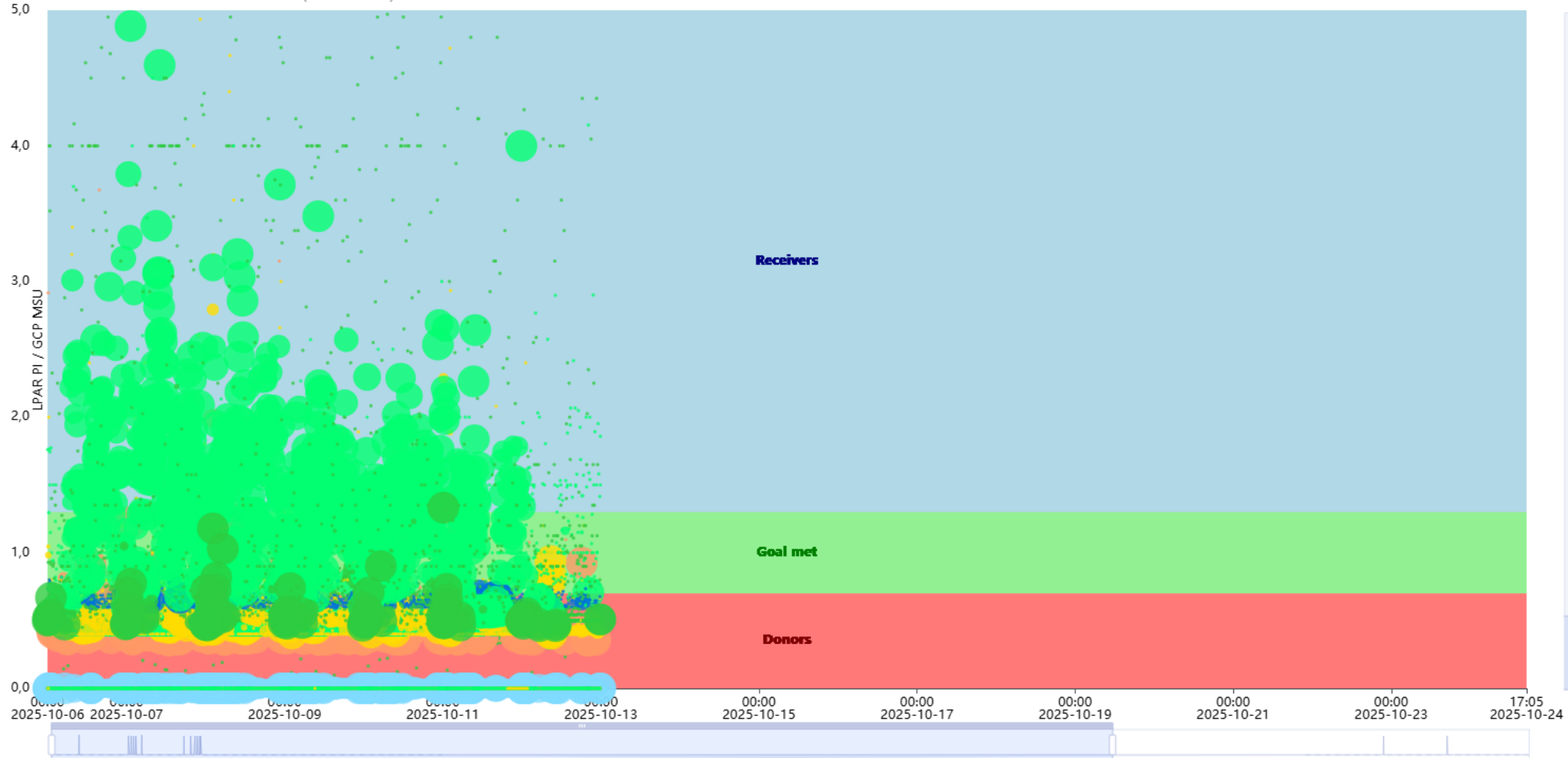
WLM Basics

- The Workload Manager distinguishes between different types of workloads
 - STC's
 - Jes/Batch
 - OMVS
 - TSO
 - Transactional Workload (DDF,IMS,CICS)
 -
- The Workload Manager is controlled by the so-called “WLM policy.” Only one WLM policy can be active at any given time. However, any number of different policies can be installed in the system.
- A policy consists mainly of two parts:
The definition of service classes and the mapping of workloads to those service classes through classification rules.
- In the various subgroups of the Classification Rules, a rule is used to determine which job is assigned which service class, for example. Indirectly, this job is then assigned the corresponding importance and other performance parameters via the service class.



Performance Index Distribution per Service Class

Performance Index Distribution - Service classes
2025-10-06 00:00 UTC+2 - 2025-10-31 23:59 UTC+1 (Interval: 10m)

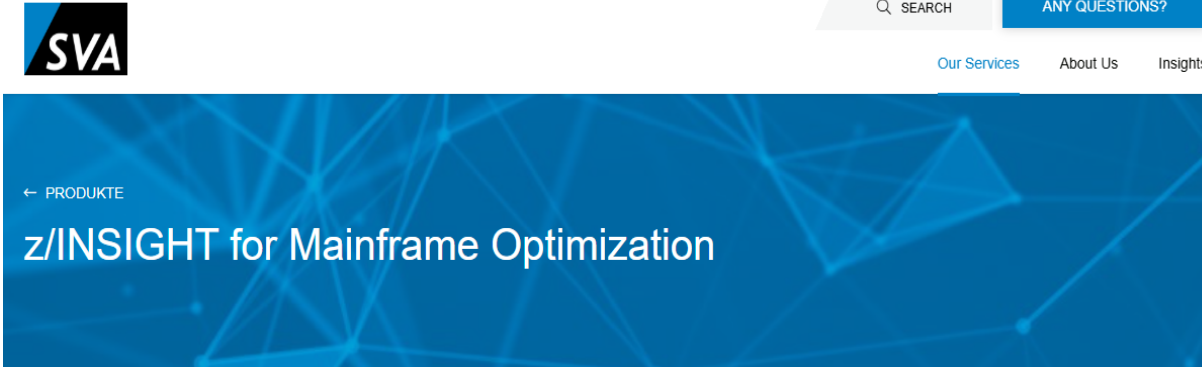


All Toggle

- LPAR PI DIPLX-DI01-STC_M ED-1-Imp 3
- LPAR PI DIPLX-DI01-STC_HI -1-Imp 2
- LPAR PI DIPLX-DI01-STC_M ON-1-Imp 3
- LPAR PI DIPLX-DI01-STC_CR IT-1-Imp 1
- LPAR PI DIPLX-DI01-OMVS-3-Imp 4
- LPAR PI DIPLX-DI01-STC_LO W-1-Imp 4
- LPAR PI DIPLX-DI01-OMVS-1-Imp 3
- LPAR PI DIPLX-DI01-CB-1-Imp 2
- LPAR PI DIPLX-DI01-OMVS-2-Imp 3
- LPAR PI DIPLX-DI01-ENC_M _RG-1-Imp 4
- LPAR PI DIPLX-DI01-STC_NE T-1-Imp 2
- LPAR PI DIPLX-DI01-BATWL M_L-1-Imp 5
- LPAR PI DIPLX-DI01-BATWL M_M-1-Imp 3
- LPAR PI DIPLX-DI01-BATWL M_H-1-Imp 2
- LPAR PI DIPLX-DI01-SYSSTC -1-System
- LPAR PI DIPLX-DI01-SYSTE M-1-System
- LPAR PI DIPLX-DI01-TSOPR D-1-Imp 3
- LPAR PI DIPLX-DI01-ONL_D B2-1-Imp 3
- LPAR PI DIPLX-DI01-TSOPR D-2-Imp 4
- LPAR PI DIPLX-DI01-TSOPR D-3-Imp 5

Check out z/INSIGHT online

Website: [z/INSIGHT | sva.de](https://z/INSIGHT.sva.de)



Software-based service for mainframe performance management

z/INSIGHT is an innovative, software-based service for z/OS environments, developed by SVA. It combines expert services with intelligent software in a way that's truly unique. At the heart of z/INSIGHT is the decades of experience our mainframe consultants bring — not just technical expertise, but a deep understanding of your individual requirements and needs.

Intelligent software, expert services, and decades of mainframe know-how — together, they set the stage for smarter and more impactful mainframe optimization. From **precise data analysis to actionable recommendations, all the way through implementation and success monitoring.** With z/INSIGHT, we're with you every step of the way. We make sure your mainframe doesn't just operate but truly excels at peak performance.

Your toughest mainframe challenges, solved.

Many companies face the same challenges in the mainframe space: lack of transparency is one of the biggest obstacles in modern mainframe management. Without clear visibility into workloads, system utilization, and performance bottlenecks, informed decisions are nearly impossible. Early reactions to critical developments become equally challenging.

Do you have any questions?
If you would like to learn more about this topic, we would be happy to hear from you.

[GO TO THE CONTACT FORM](#)

z/INSIGHT

Flyer: [SVA z Insight Infolyer.pdf](#)



DETAILED VISUALIZATIONS FOR FULL CONTROL AND TRANSPARENCY

The foundation of our service is the z/INSIGHT software solution. It filters and aggregates your system data and presents it in modern and interactive dashboards and reports. With over 450 consolidated and easy-to-understand reports, you gain full transparency into your mainframe environment. In order to ensure you always stay in control, z/INSIGHT offers a wide range of features tailored to the needs of modern mainframe environments.

In addition, the software comprehensively processes SMF data from all relevant areas — from batch jobs, workloads, and CPU utilization to memory, network, and security activities, as well as DB2 and CICS. This creates a comprehensive view of your mainframe performance, reducing complexity and enabling data-driven decisions — with speed and precision.

FEATURES

- **Dashboards:** Fully customizable and tailored to the information you need
- **Reports:** Evaluations with deep insights into system and performance data
- **Bookmarks:** Saved analyses for instant access with a single click
- **Drilldown functions:** In-depth analyses down to the process-level across multiple reports
- **WLM Policies:** Precise visualization and analysis of workload management and priorities
- **CEC-Overview:** Complete overview of your entire mainframe infrastructure

ABOUT SVA

SVA System Vertrieb Alexander GmbH is one of the leading German system integrators and combines high quality IT products of different vendors with the project know-how and flexibility of SVA to achieve optimum solutions. SVA core subjects are not only Data Center, Business Continuity, Digital Process Solutions and SAP but also solutions for modern demands such as Cloud, Cyber Security, Big Data & AI, Modern Workplace and Agile IT & Software Development.



CONTACT

Gerald Pfeiffer
Product Manager zProducts
E-Mail: zproducts@sva.de

SVA System Vertrieb Alexander GmbH
Borsigstraße 26
65205 Wiesbaden
www.sva.de

Gerald Pfeiffer

Teamlead zProducts



+49 151 44845560

Gerald.Pfeiffer@sva.de

www.sva.de

Headquarter Wiesbaden

Borsigstraße 26

65205 Wiesbaden

Germany

